



SOFTBALL WEEKLY REPORT



Feb. 14, 2019 • Week 3
GNACSports.com • @GNACSports

Contact: Blake Timm, Assistant Commissioner For Communications
503-805-8756 • btimm@gnacsports.com

2019 GNAC Softball Standings

	GNAC			Overall			Home	Away	Neutral	Streak
	W	L	Pct.	W	L	Pct.				
Western Oregon	0	0	.000	3	0	1.000	0-0	0-0	3-0	Won 3
Saint Martin's	0	0	.000	2	1	.667	0-0	0-0	2-1	Lost 1
Central Washington	0	0	.000	5	3	.625	0-0	0-0	5-3	Lost 2
Montana State Billings	0	0	.000	6	4	.600	0-0	0-1	6-3	Won 1
Northwest Nazarene	0	0	.000	5	5	.500	0-0	0-2	5-3	Lost 4
Western Washington	0	0	.000	4	4	.500	0-0	0-1	4-3	Lost 2
Concordia	0	0	.000	2	5	.286	0-0	0-1	1-4	Lost 1
Simon Fraser	0	0	.000	0	0	.000	0-0	0-0	0-0	—

LAST WEEK'S GAMES

Thurs., Feb. 7

Central Washington 9, Metro State 0 (5 inn.)
Northwest Nazarene 9, CSU Pueblo 0
Hawaii Hilo 7, Montana State Billings 6
Western Washington 11, Western New Mexico 9
Central Washington 8, Hawaii Pacific 7
Northwest Nazarene 7, Chadron State 6 (8 inn.)
Western Washington 3, Metro State 2
Montana State Billings 8, Fort Lewis 7 (8 inn.)

Fri., Feb. 8

Central Washington 8, Fort Lewis 5
Western New Mexico 6, Montana State Billings 4
at Dixie State 2, Montana State Billings 1 (8 inn.)
Colorado Mesa 6, Central Washington 0
Northwest Nazarene 4, Western New Mexico 1
Western Washington 7, Fort Lewis 1
Colorado Mesa 7, Western Washington 2
Metro State 6, Northwest Nazarene 2

Sat., Feb. 9

Montana State Billings 10, Metro State 2 (5 inn.)
Cal State East Bay 8, Central Washington 4
Oregon Tech 3, Concordia 0
Fort Lewis 12, Northwest Nazarene 5
at Dixie State 10, Western Washington 7 (9 inn.)
at Simpson (Calif.) 6, Concordia 1

Sun., Feb. 10

Concordia 6, at Simpson (Calif.) 1
Oregon Tech 9, Concordia 1 (6 inn.)

Mon., Feb. 11

at Dixie State 6, Northwest Nazarene 4
at Dixie State 13, Northwest Nazarene 1 (5 inn.)

THIS WEEK'S GAMES

Fri., Feb. 15

Concordia at Cal State San Marcos (2), Noon
Saint Martin's vs. Fort Lewis (at Tucson, Ariz.), 12:30 p.m.
Simon Fraser vs. UT-Permian Basin (2) (at Tucson, Ariz.), 12:30 p.m.
Saint Martin's vs. Colorado Mesa (at Tucson, Ariz.), 3 p.m.
Simon Fraser vs. Black Hills St. (at Tucson, Ariz.), 3 p.m.
Western Oregon vs. St. Edwards (at St. George, Utah), 3:30 p.m.

Sat., Feb. 16

Simon Fraser vs. Biola (at Tucson, Ariz.), 10 a.m.
Western Oregon vs. St. Edwards (at St. George, Utah), 10 a.m.
Concordia at Concordia-Irvine (2), 11 a.m.
Montana St. Billings at Metro State (2), Noon
Saint Martin's vs. Biola (at Tucson, Ariz.), 12:30 p.m.
Simon Fraser vs. Colorado Mesa (at Tucson, Ariz.), 12:30 p.m.
Saint Martin's vs. Black Hills St. (at Tucson, Ariz.), 3 p.m.
Western Oregon vs. Adelphi (at St. George, Utah), 3 p.m.

Sun., Feb. 17

Simon Fraser vs. Fort Lewis (at Tucson, Ariz.), 9 a.m.
Saint Martin's vs. St. Mary's (Texas) (at Tucson, Ariz.), 9 a.m.
Montana State Billings vs. Colorado Mines (2) (at Denver), 10 a.m.
Concordia vs. St. Katherine (2) (at San Marcos, Calif.), 11 a.m.
Simon Fraser vs. St. Mary's (Texas) (at Tucson, Ariz.), 11:30 a.m.
Western Oregon vs. Adelphi (at St. George, Utah), 12:30 p.m.
Western Oregon at Dixie State, 3 p.m.

All times local to game site
Check GNACSports.com for schedule updates.

#GNACSB in 280 @GNACSports

#NoRunsNoHits Northwest Nazarene's **Jordan Adams** threw just the fourth no-hitter in the GNAC since 2010 as she allowed just one walk in Friday's 9-0 win over CSU-Pueblo. The performance earned Adams GNAC Pitcher of the Week honors.

#HittingHommel The Nighthawks' **Ivy Hommel** was named the GNAC Softball Player of the Week after she hit .571 in the five games at the Courtyard Dixie State Classic with four runs, five RBI, a double and a home run.

#MaKKKInlee Western Washington's **Makinlee Sellevoid** struck out 27 in 30 innings at the Courtyard Dixie State Classic. She went 3-2 in the tournament and earned the decision in all of the Vikings' games.

#TourneyTime February's tournament of tournaments continues with Western Oregon competing in the Dixie State Classic and Saint Martin's and Simon Fraser playing in the Cactus Classic.

Get Social

Twitter Accounts/Hashtags For GNAC Softball Programs

GNAC	@GNACSports	#GNACSB
Cent. Washington	@CWUWildcats	#ReignCrimson
Concordia	@gocugo	#gocugo
MSU Billings	@MSUBSports	#MSUBSB
NW Nazarene	@NNUSports	
Saint Martin's	@SMUSaints	#SaintsStrong
Simon Fraser	@SFUClan	#RepTheLeaf
W. Oregon	@WOUWolves	#WOUWolves
W. Washington	@WWUAthletics	#VIKTorious

GNAC Softball Players of the Week

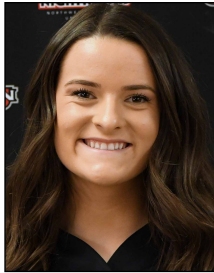


PLAYER

Ivy Hommel, Northwest Nazarene
UT • 5-5 • Sophomore • Kuna, Idaho

Hommel led the Nighthawks offensively with a .571 batting average in five games, going 8 for 14 with a double, a home run, four runs, five RBI and six stolen bases as NNU went 3-2 at the Courtyard Dixie State Classic. She had two hits in four of the Nighthawks' five games. Hommel went 2 for 3 with a home run and a pair of stolen bases in Thursday's 7-6, eight-inning win over Chadron State and then went 2 for 3 with two more stolen bases in Friday's 6-2 loss to Metro State.

Also Nominated: Theresa Moyle (Central Washington), Emily Benson (Western Washington).



PITCHER

Jordan Adams, Northwest Nazarene
P • 5-8 • Sophomore • Gig Harbor, Wash.

Adams improved to 3-0 on the season as she allowed one run on five hits with two walks and 14 strikeouts to win a pair of games at the Courtyard Dixie State Classic. Adams opened by throwing the 24th no-hitter in GNAC history and just the sixth seven-inning no-hitter by a single pitcher, in a 9-0 win over CSU-Pueblo on Thursday, walking one and striking out eight in the process. She then allowed one run on five hits with a walk and six strikeouts in Friday's 4-1 win over Western New Mexico. In 18 innings so far this season, Adams has allowed just one earned run.

Also Nominated: Lexie Strasser (Central Washington), Sally Bowles (Concordia), Makinlee Sellevold (Western Washington).

Past GNAC Players of the Week

Date	Player	Pitcher
Jan. 27-Feb. 3	Ali Steen, CU	Lexi Strasser, CWU Maddie Mayer, WOU
Feb. 4-10	Ivy Hommel, NNU	Jordan Adams, NNU

Complete Player of the Week releases are available online at GNACSports.com.

GNAC News & Notes

NO-HITTER HIGHLIGHTS DIXIE STATE TOURNEY: With the way that Northwest Nazarene's **Jordan Adams** threw during her freshman season, one had to figure a no-hitter was in the cards at some point.

That no-hitter came on Friday as Adams blanked CSU-Pueblo 9-0 to open the Nighthawks' 3-2 run at the Courtyard Dixie State Classic. Adams allowed just one walk in the game and struck out eight. The walk was all that separated Adams from a perfect game.

The no-no was the 24th in GNAC history and the first since Apr. 22, 2018, when Central Washington's **Taylor Williams** scored an 8-0, five-inning win over Western Washington. The effort by Adams was only the sixth in conference history by a single pitcher in a regulation seven-inning game. The last was thrown by Simon Fraser's Kara Lukawesky in a 6-0 win over Northwest Nazarene on Mar. 10, 2012.

While no-hitters were fairly common over the first decade of GNAC play, they have been increasingly rare in the second decade. Adams' performance was just the fourth no-hitter thrown by a GNAC team since 2010.

TOURNAMENT ACTION CONTINUES: Five of the GNAC's eight teams will play this weekend, with most of that action coming in tournaments. Western Oregon will head to St. George, Utah, to take part in the Dixie State Classic while both Saint Martin's and Simon Fraser will play at the Cactus Classic in Tucson, Ariz. For the Clan, the games will open the 2019 campaign.

Montana State Billings heads to Denver for a pair of doubleheaders with MSU Denver and Colorado Mines. Concordia, meanwhile, travels to Southern California for a trio of twinbills with Cal State San Marcos, Concordia Irvine and Saint Katherine.

Around The GNAC

CENTRAL WASHINGTON



• Central Washington continued its season by going 3-2 at the Courtyard Dixie State Classic. The Wildcats scored a 9-0, five-inning win over MSU Denver and an 8-7 win over Hawaii Pacific on Thursday and an 8-5 victory over Fort Lewis on Friday.

• Junior **Savannah Egbert** led the CWU offense, hitting .467 in the five games as went 7 for 15 with five runs and three RBI. Her best effort came against Fort Lewis on Friday where she went 2 for 3 with two runs and two RBI, including one on a two-out single in the fourth. Egbert has a .455 batting average through eight games, fourth in the GNAC, and shares the GNAC lead with six stolen bases.

• Sophomore **Katie Kastning** batted .462 in the tournament, going 6 for 13 with two runs and six RBI. Kastning went 2 for 3 with a two-RBI single in the second against Hawaii Pacific and had an RBI single in the opener against MSU Denver. Kastning enters the week with .350 batting average.

• Freshman pitcher Samantha Stanfield earned two of the Wildcats' three wins in the circle. She allowed seven runs, one earned, on five hits with nine strikeouts to beat Hawaii Pacific on Thursday and then earned the win in relief over Fort Lewis on Friday, allowing two runs on seven hits in four innings. Stanfield has a 4.72 earned run average in four appearances.

• Central Washington enters the week with a .253 batting average and a 4.58 earned run average.

• A weekend doubleheader against in-state Division III rival Pacific Lutheran, scheduled for Saturday, was canceled due to the heavy snow in Washington. The Wildcats return to action when they participate in the Cavalier Classic on Feb. 22 and 23.

CONCORDIA



• Concordia went 1-3 in a four-game against NAIA rivals Oregon Tech and Simpson (Calif.) in Redding, Calif. The Cavaliers' lone victory was a 6-1 win over Simpson in Sunday's opening game.

• Junior **Karley Yoshioka** led the Cavaliers offensively with a .308 batting average, going 4 for 13 in the four games. She went 2 for 3 in Saturday's opener with Oregon Tech and

had her lone RBI on a sixth-inning single against Simpson on Sunday. Yoshioka enters the week with a .348 batting average.

• Senior **Mckenzie Smith** went 3 for 8 in three games on the road trip, led by a 2 for 3 effort on Sunday against Simpson that included a run scored. Smith also pitched in two games in the series. She enters the week with a .313 batting average in six games.

• Junior **Sally Bowles** picked up the lone pitching win of the series against Simpson on Sunday, allowing one run on four hits with three strikeouts for her first win of the year. She helped her own cause by going 2 for 2 with a two-run homer. Bowles is 22nd in Division II with 0.41 walks allowed per seven innings, issuing just one walk in 17 innings of work.

• Concordia enters the week second in the GNAC with a .312 batting average and leads the conference with eight home runs. The Cavaliers are also second in the GNAC with a .937 fielding percentage. In addition, Concordia is 18th in Division II with 1.18 home runs per game and 25th with a .522 slugging percentage.

• Concordia will head to Southern California this week for doubleheaders against Cal State San Marcos on Friday, Concordia-Irvine on Saturday and Saint Katherine on Sunday.

MONTANA STATE BILLINGS



• After opening the week with a sweep of Hawaii Pacific on Monday, 6-2 and 12-3, Montana State Billings went 2-3 at the Courtyard Dixie State Classic. The Yellowjackets picked up an 8-7, eight-inning win over Fort Lewis on Thursday and a 10-2, five-inning win over MSU Denver on Saturday.

• Freshman **Rylan Austin** led MSUB offensively with a .364 batting average in the seven games, going 8 for 22 with two runs, four RBI and a double. Austin scored three of her runs in Monday's nightcap against the Sharks. She then went 2 for 4 against Hawaii Hilo on Thursday and 2 for 3 against Western New Mexico on Friday. Austin leads the Yellowjackets with a .375 batting average.

• Sophomore **Britanee Fisher** and freshman **Sidney Pollard** each finished with a .333 batting average and went 7 for 21 in the seven games. Fisher had two hits in three games, punctuated by her 2 for 3 with a two-RBI double and a home run against MSU Denver. Pollard's week was highlighted by her 2 for 3 performances in the first game against Hawaii Pacific. Pollard has a .375 batting average in eight games while Fisher is batting .321 in 10 games.

• Junior **Maddy Lincoln** went 2-2 in the circle last week, allowing 14 runs, 11 earned, in 27 innings. She earned the game two win over Hawaii Pacific, allowing three runs on seven hits and striking out three. Lincoln then logged the win over MSU Denver, allowing two runs on seven hits and three strikeouts. Lincoln enters the week with a 3.41 earned run average in seven appearances.

• Montana State Billings enters the week third in the GNAC with a .298 batting average and second with a 3.55 earned run average. The Yellowjackets are 29th in Division II with a .431 on base percentage.

• The Yellowjackets will play four games in Denver this weekend, taking on MSU Denver in a twinbill on Saturday and Colorado Mines for two games on Sunday.

NORTHWEST NAZARENE



• Northwest Nazarene went 3-2 at the Courtyard Dixie State Classic, picking up a 9-0 win over CSU-Pueblo and a 7-6 win over Chardon State on Thursday and a 6-2 win over Western New Mexico on Saturday. The Nighthawks closed on the trip on Monday with doubleheader losses to Dixie State.

• Sophomore **Jordan Adams** was named the GNAC Pitcher of the Week after she allowed just one run and struck out 14 in two wins. On Friday, Adams threw the 24th no-hitter in GNAC history, and just the sixth seven-inning no-hitter by one pitcher, in the win over CSU-Pueblo. She allowed just one walk and struck out eight. Adams then allowed one run on five hits and struck out six to beat Western New Mexico on Friday. Adams leads the GNAC with a 3-1 record and 0.88 earned run average and is tied for 19th in Division II with 28 strikeouts.

• Sophomore **Ivy Hommel** was named the GNAC Softball Player of the Week after she batted .571 in the Courtyard Dixie State Classic, going 8 for 14 with a double, a home run, four runs, five RBI and six stolen bases. She went 2 for 3 with a home run and a pair of stolen bases against Chadron State and then went 2 for 3 with two more stolen bases in Friday's 6-2 loss to Metro State. Hommel is batting .391 in 10 games this season.

• Following the Dixie State series on Monday, the Nighthawks are batting .293 and own a 4.52 earned run average. They lead the league with 81 hits and 18 doubles.

• Northwest Nazarene will be off this weekend before opening their 2019 home schedule next weekend with doubleheaders against Menlo on Feb. 22 and Willamette on Feb. 23.

Around The GNAC

SAINT MARTIN'S



- Saint Martin's did not play last weekend after going 2-1 at the Desert Stinger. The Saints will play this weekend at the Cactus Classic in Tucson, Ariz., with games against Fort Lewis and Colorado Mesa on Thursday, Biola and Black Hills State on Friday and St. Mary's (Texas) on Saturday.
- Saint Martin's went 2-1 at the Desert Stinger to open the season. The Saints collected a 7-2 win over Stanislaus State and an 11-10 win over Colorado Christian and took a 7-5 loss to Cal State Dominguez Hills on Sunday.
- Senior **Sabrina Hicks** was named the Desert Stinger All-Tournament Team after she hit .600 in the three games, going 6 for 10 with six runs, six RBI and two home runs. Hicks went 3 for 4 with six RBI against Stanislaus State, hitting a three-run homer in the third and a two-run shot in the fifth. She then went 2 for 4 against Colorado Christian.
- Senior **Lauren Diuco** hit .500 in the three games, going 6 for 12 with three runs and an RBI. She went 3 for 4 with two runs scored against Stanislaus State and then went 2 for 4 with an RBI single against Cal State Dominguez Hills.
- Junior **Brandi Schoessler** threw in all three games in her SMU debut, compiling a 2.84 earned run average. She earned the win in relief against Stanislaus State, allowing one run on two hits in 4.1 innings of work. Schoessler earned the win in long relief again against Colorado Christian, allowing two runs, one earned, on five hits in four innings.
- Saint Martin's leads the GNAC with a .330 batting average and enters the week with a 5.25 earned run average.

SIMON FRASER



- Simon Fraser is the lone GNAC team to have not yet started their season. That changes this weekend as the Clan competes in the Cactus Classic on Feb. 15, 16 and 17. The Clan will have games against UT-Permian Basin, Black Hills State, Biola, Colorado Mines, Fort Lewis and St. Mary's (Texas).
- After advancing to the GNAC Championships final in 2018, Simon Fraser was picked to finish fifth in the 2019 GNAC Preseason Coaches Poll.

WESTERN OREGON



- Western Oregon did not play last weekend after opening the season with a 3-0 record at the Desert Stinger. The Wolves scored an 8-3 win over Colorado Christian, a 6-5, nine-inning win over Cal State Monterey Bay a 7-2 win over No. 7 Chico State.
- The Wolves return to action this weekend at the Dixie State Classic, playing two games against St. Edward's on Thursday and Friday, Adelphi on Friday and Saturday and Dixie State on Sunday.
- Freshman **Maddie Mayer** led the way in the circle, going 2-0 to be named to the Desert Stinger All-Tournament Team as she went 2-0 at the Desert Stinger, allowing five runs, three earned, on eight hits in 13 innings. Mayer threw all nine innings against Cal State Monterey Bay, allowing five runs, three earned, on eight hits with five strikeouts. Mayer then threw four innings of hitless relief with four strikeouts on Sunday to earn the win over Chico State. Mayer is second in the GNAC with a 1.62 earned run average.
- Sophomore **Tyler Creach** was also named to the All-Tournament Team after she hit .500 in the tournament, going 7 for 14 with two runs and two RBI. She went 4 for 4 in the opener with Colorado Christian and scored a run. Creach then went 2 for 5 with two RBI on a triple in the seventh against Cal State Monterey Bay and had one hit against Chico State.
- Senior **Ryanne Whitaker** hit .417 in the Desert Stinger, going 5 for 12 with three runs and a pair of triples. She hit one her triples and scored two runs against Colorado Christian and then went 3 for 5 with an RBI center against Colorado Christian.
- Western Oregon enters the week with a .287 batting average and leads the GNAC with a 2.43 earned run average and .972 fielding percentage.

WESTERN WASHINGTON



- Western Washington went 3-2 at the Courtyard Dixie State Classic, scoring an 11-9 win over Western New Mexico on and a 3-2 win over MSU Denver on Thursday and a 7-1 win over Fort Lewis on Friday.
- Senior **Mackinlee Sellevold** was solid in the circle in the Vikings, earning the decision in all five games of the tournament and finished with 27 strikeouts in 30 innings pitched. She claimed the win in 3.1 innings in relief against Western New Mexico and went the distance against MSU Denver, allowing two runs, one earned, while striking out nine. Sellevold did the game thing against Fort Lewis, allowing one run on six hits while striking out nine more. Sellevold enters the week with a 4-4 record and 3.07 earned run average. She is 13th in Division II with 31 strikeouts.
- Senior **Emily Benson** led the WWU offense as she hit .462 in the five games, going 6 for 13 with five runs, six RBI, a double and two home runs. She provided the winning run with a solo home run in the seventh inning to beat MSU Denver and then went 2 for 3 with an RBI and a double against Fort Lewis. On Sunday, Benson went 2 for 4 against Dixie State with a two-run homer and an RBI single in the ninth. Benson enters the week with a .400 batting average in eight games.
- Western Washington enters the week with a .271 batting average and is third in the GNAC with a 4.47 earned run average.
- The Vikings will not play this weekend. Western Washington returns to action at the Cavalier Classic in Portland on Feb. 22 and 23 with games against Eastern Oregon, Simpson (Calif.), Corban and Northwest (Wash.).

NCAA Division II National Rankings

NFCA DIVISION II COACHES TOP 25 POLL

Preseason - Jan. 30, 2019

Rk	School (1st)	Record	Pts.	Prev.
1	Southern Indiana (16)	41-23	400	
2	Southern Arkansas	60-11	363	
3	North Georgia	62-4	354	
4	Saint Anselm	44-13-1	353	
5	Saint Leo	39-18	341	
6	Angelo State	53-9	330	
7	Chico State	55-6	320	
8	West Chester	45-15	274	
9	Texas A&M-Commerce	42-12	266	
10	Concordia Irvine	46-14	239	
11	UAH	39-18	236	
12	Illinois Springfield	40-19	211	
13	Young Harris	35-21	194	
14	Tarleton State	50-11	187	
15	Winona State	45-7	182	
16	Grand Valley State	44-9	151	
17	Dixie State	42-10	136	
18	Palm Beach Atlantic	36-8	123	
19	Lenoir-Rhyne	45-10	109	
20	Arkansas Tech	44-19	88	
21	Colorado Mesa	48-5	82	
22	Valdosta State	42-13	61	
23	UC San Diego	36-19	60	
24	Gannon	32-15	49	
25	Augustana (S.D.)	42-15	46	

Others Receiving Votes: Southern New Hampshire (24), Embry-Riddle (10)

Note: Next poll is on Feb. 20.

[View Complete Poll Online](#)

GNAC In Division II Statistics

TEAM - Top 30 as of Feb. 11, 2019

Category	Institution	Avg./Total	Rank
Double Plays Per Gm	Saint Martin's	1.00	2nd
Doubles Per Game	Concordia	2.14	13th
Fielding Percentage	Western Oregon	.972	28th
Hit Batters	Western Washington	1	1st
Home Runs Per Game	Saint Martin's	2.00	1st
	Concordia	1.14	18th
On Base Percentage	Montana State Billings	.431	29th
Scoring	Saint Martin's	7.67	20th
	Western Oregon	7.00	30th
Slugging Percentage	Saint Martin's	.568	15th
	Concordia	.522	25th
Stolen Bases Per Game	Saint Martin's	2.33	17th
Strikeout-To-Walk Ratio	Western Oregon	3.25	21st
Triples Per Game	Western Oregon	1.00	1st
Win/Loss Percentage	Western Oregon	1.000	1st

INDIVIDUALS - Top 30 as of Feb. 11, 2019

Category	Player	Avg./Total	Rank
Doubles	Anna Williams, NNU	5	5th
Doubles Per Game	Cheyenne Rimer, WOU	0.67	22nd
Hit Batters	Eight Players Tied At	1	1st
Hit By Pitch Per Game	Allie Hughes, MSUB	0.60	13th
	Cailee Morgan, MSUB	0.60	13th
	Sidney Pollard, MSUB	0.50	21st
Hits	Anna Williams, NNU	14	16th
Home Runs Per Game	Sabrina Hicks, SMU	0.67	2nd
	Kylie Lopez, SMU	0.67	2nd
	Teresa Moyle, CWU	0.50	12th
Home Runs	Allie Hughes, MSUB	3	12th
	Teresa Moyle, CWU	3	12th
	Anna Williams, NNU	3	12th
Runs Batted In Per Gm.	Kylie Lopez, SMU	2.33	7th
	Sabrina Hicks, SMU	2.00	12th
	Alyssa French, SMU	1.67	29th
Runs Per Game	Sabrina Hicks, SMU	2.00	5th
Sacrifice Flies	Six Players Tied At	1	20th
Sacrifice Hits Per Game	Ayanna Arceneaux, WOU	0.67	7th
	Rylan Austin, MSUB	0.40	30th
Saves	Alia Stachoski, SFU	5	9th
Slugging Percentage	Sabrina Hicks, SMU	1.200	12th
	Teresa Moyle, CWU	1.118	18th
	Kylie Lopez, SMU	1.000	30th
Stolen Bases	Lauren Diuco, SMU	1.00	12th
Strikeout To Walk Ratio	Maddie Mayer, WOU	9.00	11th
Strikeouts	Makinlee Sellevoid, WWU	31	13th
	Jordan Adams, NNU	28	19th
	Maddy Lincoln, MSUB	28	19th
Total Bases	Anna Williams, NNU	28	3rd
Toughest To Strike Out	Five Players Tied At	0.0	1st
Triples	Ryanne Whitaker, WOU	2	6th
	Five Players Tied At	1	28th
Triples Per Game	Ryanne Whitaker, WOU	0.67	3rd
	Tyler Creach, WOU	0.33	12th
Victories	Makinlee Sellevoid, WWU	4	5th
	Jordan Adams, NNU	3	24th
	Maddy Lincoln, MSUB	3	24th
	Lexie Strasser, CWU	3	24th
Walks Allowed Per 7 Inn.	Sally Bowles, CU	0.41	22nd
	Maddie Mayer, WOU	0.54	25th

GNAC Team Statistics & Leaders

TEAM BATTING												INDIVIDUAL LEADERS	
	G	Avg.	AB	R	H	2B	3B	HR	BB	SO	SB-ATT	HITS	
Saint Martin's	3	.330	88	23	29	1	1	6	11	16	7-8	Williams,Anna-NNU 14	
Concordia (Ore.)	7	.312	186	30	58	15	0	8	16	33	5-6	Austin,Rylan-MSUB 12	
MSU Billings	10	.298	265	67	79	13	3	7	43	42	3-3	Morgan,Cailee-MSUB 11	
Northwest Nazarene	10	.293	276	46	81	18	1	7	33	26	14-14	Orr,Kylie-NNU 11	
Western Oregon	3	.287	94	21	27	4	3	2	14	17	2-3	2 tied with 10 hit(s)	
Western Washington	8	.271	218	43	59	5	0	6	24	39	2-2		
Central Washington	8	.253	194	38	49	8	1	6	32	33	12-16		
Totals	24	.289	1321	268	382	64	9	42	173	206	45-52		
TEAM PITCHING												RUNS SCORED	
	G	ERA	W	L	SV	IP	H	R	ER	BB	SO		
Western Oregon	3	2.43	3	0	0	23.0	21	10	8	4	13	Fisher,Brittanee-MSUB 11	
MSU Billings	10	3.55	6	4	0	67.0	70	45	34	25	45	Williams,Anna-NNU 11	
Western Washington	8	4.47	4	4	0	51.2	61	52	33	28	39	Pollard,Sydney-MSUB 11	
Northwest Nazarene	10	4.52	5	5	2	65.0	78	59	42	30	44	Hughes,Allie-MSUB 11	
Central Washington	8	4.58	5	3	1	52.0	55	46	34	19	37	2 tied with 8 run(s) scored	
Saint Martin's	3	5.25	2	1	0	20.0	32	19	15	7	5		
Concordia (Ore.)	7	7.00	2	5	0	41.0	66	53	41	21	16	RUNS BATTED IN	
Totals	24	4.53	27	22	3	319.2	383	284	207	134	199	Hughes,Allie-MSUB 9	
												5 tied with 8 RBI(s)	
TEAM FIELDING												DOUBLES	
	G	PO	A	E	Pct.	DP	PB	SBA-ATT					
Western Oregon	3	69	35	3	.972	1	1	1-1			Williams,Anna-NNU 5		
Concordia (Ore.)	7	123	69	13	.937	4	2	4-7			Smith,Mckenzie-CU 3		
MSU Billings	10	201	79	19	.936	3	1	13-18			Smith,Kayla-CWU 3		
Northwest Nazarene	10	195	68	19	.933	3	3	8-11			Gherir,Linda-CU 3		
Central Washington	8	156	70	17	.930	3	0	10-10			Pollard,Sydney-MSUB 3		
Western Washington	8	155	58	17	.926	3	1	5-9					
Saint Martin's	3	60	38	8	.925	3	0	5-5			TRIPLES		
Totals	24	959	417	96	.935	20	8	46-61			Whitaker,Ryanne-WOU 2		
											7 tied with 1 triple(s)		
INDIVIDUAL BATTING												HOME RUNS	
Min. 2.5 AB / Team Game	G	Avg.	AB	R	H	RBI	2B	3B	HR	BB			
Hicks,Sabrina-SMU	3	.636	11	5	7	7	0	0	2	0	Steen,Ali-CU 4		
Creach,Tyler-WOU	3	.500	14	2	7	2	0	1	0	0	Moyle,Theresa-CWU 3		
Diuco,Lauren-SMU	3	.500	12	4	6	1	0	0	0	0	Williams,Anna-NNU 3		
Egbert,Savannah-CWU	8	.455	22	7	10	4	0	0	0	6	Hughes,Allie-MSUB 3		
Favela,Trinity-SMU	3	.455	11	0	5	1	0	0	0	0	8 tied with 2 home run(s)		
Whitaker,Ryanne-WOU	3	.417	12	3	5	1	0	2	0	1			
Willoughby,Paityn-CU	7	.409	22	4	9	2	1	0	1	5	TOTAL BASES		
Lucido,Jackie-WWU	8	.409	22	4	9	7	2	0	1	1	Williams,Anna-NNU 28		
Orr,Kylie-NNU	10	.407	27	2	11	6	1	0	0	7	Moyle,Theresa-CWU 19		
Williams,Anna-NNU	10	.400	35	11	14	8	5	0	3	1	Hughes,Allie-MSUB 19		
Benson,Emily-WWU	8	.400	20	6	8	7	1	0	2	6	Steen,Ali-CU 19		
Austin,Rylan-MSUB	10	.375	32	3	12	5	2	0	0	4	Fisher,Brittanee-MSUB 17		
Kastning,Katie-CWU	8	.350	20	3	7	6	1	0	0	3			
Yoshioka,Karley-CU	7	.348	23	3	8	1	2	0	0	0	STOLEN BASES		
Cyr,Paityn-WWU	8	.348	23	5	8	6	0	0	2	5	Hommel,Ivy-NNU 6-6		
											Egbert,Savannah-CWU 6-8		
											Williams,Anna-NNU 5-5		
											Johnson,Rachael-CWU 4-4		
											2 tied with 3 stolen base(s)		
INDIVIDUAL PITCHING												STRIKEOUTS	
Min. 1.0 IP / Team Game	App	ERA	W-L	SV	IP	H	R	ER	BB	SO			
Adams,Jordan-NNU	4	0.88	3-1	0	24.0	14	8	3	9	28	IP SO		
Mayer,Maddie-WOU	2	1.62	2-0	0	13.0	8	5	3	1	9	Sellevoid,Makinlee-WWU 41.0 31		
Strasser,Lexie-CWU	6	1.98	3-2	1	28.1	20	11	8	4	17	Lincoln,Maddy-MSUB 37.0 28		
Schoessler,Brandi-SMU	3	2.84	2-0	0	12.1	15	7	5	3	2	Adams,Jordan-NNU 24.0 28		
Fabian,Haley-WOU	1	3.00	1-0	0	7.0	9	3	3	1	3	Strasser,Lexie-CWU 28.1 17		
Sellevoid,Makinlee-WWU	8	3.07	4-4	0	41.0	40	32	18	19	31	Stanfield,Samantha-CWU 13.1 15		
Lincoln,Maddy-MSUB	7	3.41	3-2	0	37.0	42	23	18	8	28			
Bowles,Sally-CU	4	3.71	1-2	0	17.0	23	13	9	1	5			
Etheridge,Alyssa-MSUB	5	4.33	2-1	0	21.0	20	18	13	17	13			
Bishop,Chandler-WOU	1	4.67	0-0	0	3.0	4	2	2	2	1			
Stanfield,Samantha-CWU	4	4.72	2-1	0	13.1	17	15	9	6	15			
Thomas,Rylee-NNU	4	6.18	0-2	0	11.1	18	13	10	3	5			
McNicol,Maia-NNU	6	7.92	1-1	1	17.2	30	25	20	14	7			
Maley,Lauren-SMU	3	8.40	0-1	0	6.2	15	9	8	1	3			
Smith,Mckenzie-CU	4	11.67	0-2	0	12.0	25	24	20	9	7			

GNAC 2019 Individual Statistics

BATTING

Minimum 66 Percent Games Played
& 2.5 At Bats Per Game

BATTING AVERAGE

Hicks,Sabrina, SMU	.636
Creach,Tyler, WOU	.500
Diuco,Lauren, SMU	.500
Egbert,Savannah, CWU	.455
Favela,Trinity, SMU	.455
Whitaker,Ryanne, WOU	.417
Willoughby,Paityn, CU	.409
Lucido,Jackie, WWU	.409
Orr,Kylie, NNU	.407
Williams,Anna, NNU	.400
Benson,Emily, WWU	.400

SLUGGING PERCENTAGE

Hicks,Sabrina, SMU	1.182
Lopez,Kylie, SMU	1.000
Williams,Anna, NNU	.800
Benson,Emily, WWU	.750
Whitaker,Ryanne, WOU	.750

ON-BASE PERCENTAGE

Hicks,Sabrina, SMU	.636
Egbert,Savannah, CWU	.571
Willoughby,Paityn, CU	.519
Benson,Emily, WWU	.519
Orr,Kylie, NNU	.514

RUNS SCORED

Williams,Anna, NNU	11
Pollard,Sydney, MSUB	11
Fisher,Brittanee, MSUB	11
Hughes,Allie, MSUB	11
Johnson,Rachael, CWU	8
Morgan,Cailee, MSUB	8

HITS

Williams,Anna, NNU	14
Austin,Rylan, MSUB	12
Morgan,Cailee, MSUB	11
Orr,Kylie, NNU	11
Otto,Abigail, NNU	10
Egbert,Savannah, CWU	10

RUNS BATTED IN

Hughes,Allie, MSUB	9
Williams,Anna, NNU	8
Reynolds,Payton, MSUB	8
Fisher,Brittanee, MSUB	8
Steen,Ali, CU	8
Moyle,Theresa, CWU	8

DOUBLES

Williams,Anna, NNU	5
Pollard,Sydney, MSUB	3
Gherir,Linda, CU	3
Smith,Kayla, CWU	3
Smith,Mckenzie, CU	3

Additional Statistics Available at
GNACsports.com.

TRIPLES

Whitaker,Ryanne, WOU	2
Strickler,Madison, NNU	1
Morgan,Cailee, MSUB	1
Creach,Tyler, WOU	1
Benning,Georgiabel, MSUB	1
Pollard,Sydney, MSUB	1
Moyle,Theresa, CWU	1
Vanderbout,Kylee, SMU	1

HOME RUNS

Steen,Ali, CU	4
Williams,Anna, NNU	3
Moyle,Theresa, CWU	3
Hughes,Allie, MSUB	3
Eight Players Tied At	2

WALKS

Fisher,Brittanee, MSUB	11
Reynolds,Payton, MSUB	8
Orr,Kylie, NNU	7
Egbert,Savannah, CWU	6
Benson,Emily, WWU	6

HIT BY PITCH

Morgan,Cailee, MSUB	6
Hughes,Allie, MSUB	6
Pollard,Sydney, MSUB	4
Reynolds,Payton, MSUB	3
Williams,Anna, NNU	3

STOLEN BASES

Hommel,Ivy, NNU	6
Egbert,Savannah, CWU	6
Williams,Anna, NNU	5
Johnson,Rachael, CWU	4
Morgan,Cailee, MSUB	3
Diuco,Lauren, SMU	3

STEAL ATTEMPTS

Egbert,Savannah, CWU	8
Hommel,Ivy, NNU	6
Williams,Anna, NNU	5
Diuco,Lauren, SMU	4
Johnson,Rachael, CWU	4

STRIKEOUTS

Reynolds,Payton, MSUB	11
Lucido,Jackie, WWU	7
Hughes,Allie, MSUB	7
Willoughby,Paityn, CU	6
Richards,Cylie, WWU	6

PITCHING

Minimum 66 Percent Games Played
& 1.0 Innings Pitched Per Game

EARNED RUN AVERAGE

Adams,Jordan, NNU	0.88
Mayer,Maddie, WOU	1.62
Strasser,Lexie, CWU	1.98
Schoessler,Brandi, SMU	2.84
Fabian,Haley, WOU	3.00
Sellevoid,Makinlee, WWU	3.07
Lincoln,Maddy, MSUB	3.41
Bowles,Sally, CU	3.71
Etheridge,Alyssa, MSUB	4.33
Bishop,Chandler, WOU	4.67

OPPOSING BATTING AVERAGE

Adams,Jordan, NNU	.157
Mayer,Maddie, WOU	.163
Strasser,Lexie, CWU	.189
Etheridge,Alyssa, MSUB	.235
Sellevoid,Makinlee, WWU	.258

INNINGS PITCHED

Sellevoid,Makinlee, WWU	41.0
Lincoln,Maddy, MSUB	37.0
Strasser,Lexie, CWU	28.1
Adams,Jordan, NNU	24.0
Etheridge,Alyssa, MSUB	21.0

BATTERS STRUCK OUT

Sellevoid,Makinlee, WWU	31
Adams,Jordan, NNU	28
Lincoln,Maddy, MSUB	28
Strasser,Lexie, CWU	17
Stanfield,Samantha, CWU	15

STRIKEOUTS LOOKING

Lincoln,Maddy, MSUB	11
Sellevoid,Makinlee, WWU	7
Strasser,Lexie, CWU	6
Adams,Jordan, NNU	5
Etheridge,Alyssa, MSUB	4

WINS

Sellevoid,Makinlee, WWU	4
Adams,Jordan, NNU	3
Lincoln,Maddy, MSUB	3
Strasser,Lexie, CWU	3
Mayer,Maddie, WOU	2
Schoessler,Brandi, SMU	2
Etheridge,Alyssa, MSUB	2
Stanfield,Samantha, CWU	2

SAVES

McNicoll,Maia, NNU	1
Strasser,Lexie, CWU	1
Bliss,Ashley, NNU	1

APPEARANCES

Sellevoid,Makinlee, WWU	8
Lincoln,Maddy, MSUB	7
Strasser,Lexie, CWU	6
McNicoll,Maia, NNU	6
Etheridge,Alyssa, MSUB	5

GAMES STARTED

Sellevoid,Makinlee, WWU	7
Strasser,Lexie, CWU	5
Lincoln,Maddy, MSUB	5
Etheridge,Alyssa, MSUB	4
Adams,Jordan, NNU	4

GAMES IN RELIEF

Lagerquist,Kayla, CU	3
Williams,Taylor, CWU	3
McNicoll,Maia, NNU	3
Bliss,Ashley, NNU	3
Vargas,Jackie, NNU	3
Schoessler,Brandi, SMU	3
Schriever,Ashlee, NNU	3
Hancock,Allie, CU	3
Doan,Kira, WWU	3

HIT BATTERS

Bowles,Sally, CU	3
Lincoln,Maddy, MSUB	3
Six Players Tied At	2

HITS ALLOWED

Bishop,Chandler, WOU	4
Mayer,Maddie, WOU	8
Fabian,Haley, WOU	9
Adams,Jordan, NNU	14
Maley,Lauren, SMU	15
Schoessler,Brandi, SMU	15

RUNS ALLOWED

Bishop,Chandler, WOU	2
Fabian,Haley, WOU	3
Mayer,Maddie, WOU	5
Schoessler,Brandi, SMU	7
Adams,Jordan, NNU	8

EARNED RUNS ALLOWED

Bishop,Chandler, WOU	2
Mayer,Maddie, WOU	3
Fabian,Haley, WOU	3
Adams,Jordan, NNU	3
Schoessler,Brandi, SMU	5

WALKS ALLOWED

Mayer,Maddie, WOU	1
Maley,Lauren, SMU	1
Fabian,Haley, WOU	1
Bowles,Sally, CU	1
Bishop,Chandler, WOU	2

HOME RUNS ALLOWED

Three Players Tied	0
--------------------	---

FIELDING

FIELDING PERCENTAGE

20 Players Tied At	1.000
--------------------	-------

CHANCES

Fisher,Brittanee, MSUB	76
Reuble,Julia, CWU	58
Genuardi,Brittany, NNU	45
Benson,Emily, WWU	42
Kelly,Madison, MSUB	40

PUTOUTS

Fisher,Brittanee, MSUB	70
Reuble,Julia, CWU	57
Genuardi,Brittany, NNU	40
Benson,Emily, WWU	39
Kelly,Madison, MSUB	34
Stockton,Marissa, CU	34

ASSISTS

O'Neill,Tori, CU	25
Olson,Anna, NNU	19
Morgan,Cailee, MSUB	18
Egbert,Savannah, CWU	18
Reynolds,Payton, MSUB	17

ERRORS

Egbert,Savannah, CWU	7
Otto,Abigail, NNU	7
Austin,Rylan, MSUB	5
Brown,Sydney, CWU	5

GNAC 2019 Single Game Highs

TEAM HIGHS

BATTING

At Bats	37	Western Oregon (vs. Cal St. Monterey Bay, 02/01/19)
Runs Scored	13	Concordia (Ore.) (vs. Mary, 02/03/19)
Hits	17	Concordia (Ore.) (vs. Mary, 02/03/19)
RBIs	12	MSU Billings (vs. Hawaii Pacific, 02/04/19)
	12	MSU Billings (vs. Mary, 02/01/19)
	12	Concordia (Ore.) (vs. Mary, 02/03/19)
Doubles	5	Northwest Nazarene (vs. Fort Lewis, 02/09/19)
Triples	2	Western Oregon (vs. Cal St. Monterey Bay, 02/01/19)
	2	MSU Billings (vs. Hawaii Pacific, 02/03/19)
Home Runs	4	Saint Martin's (vs. Colorado Christian, 02/01/19)
Total Bases	27	Concordia (Ore.) (vs. Mary, 02/03/19)
Walks	9	MSU Billings (vs. Hawaii Pacific, 02/04/19)
Strikeouts	11	MSU Billings (vs. Dixie State, 02/08/19)
Sac Hits	2	7 Games Tied
Sac Flies	1	10 Games Tied
Stolen Bases	6	Saint Martin's (vs. Stanislaus State, 02/01/19)
Caught Stealing	2	Central Washington (vs. Hawaii Hilo, 02/01/19)
Hit By Pitch	5	MSU Billings (vs. MSU Denver, 02/09/19)
	5	MSU Billings (vs. Dixie State, 02/08/19)
Runners LOB	13	MSU Billings (vs. Hawaii Pacific, 02/04/19)
Hit Into DP	2	4 Games Tied

FIELDING

Putouts	27	Western Oregon (vs. Cal St. Monterey Bay, 02/01/19)
	27	Western Washington (vs. Dixie State, 02/09/19)
Assists	16	Concordia (Ore.) (vs. Simpson (Calif.), 02/09/19)
	16	Saint Martin's (vs. Colorado Christian, 02/01/19)
Errors	5	Northwest Nazarene (vs. Minot State, 02/01/19)
	5	Northwest Nazarene (vs. MSU Denver, 02/08/19)
Passed Balls	2	Northwest Nazarene (vs. MSU Denver, 02/08/19)
	2	Concordia (Ore.) (vs. Mary, 02/03/19)
DPs Turned	2	Saint Martin's (vs. CSU Dominguez Hills, 02/03/19)
	2	Concordia (Ore.) (vs. Simpson (Calif.), 02/09/19)
	2	Central Washington (vs. Fort Lewis, 02/08/19)

PITCHING

Innings Pitched	9.0	Western Oregon (vs. Cal St. Monterey Bay, 02/01/19)
	9.0	Western Washington (vs. Dixie State, 02/09/19)
Strikeouts	11	Northwest Nazarene (vs. Dixie State, 02/11/19)
Wild Pitches	3	MSU Billings (vs. Fort Lewis, 02/07/19)
	3	Central Washington (vs. CSU San Bernardino, 02/01/19)
	3	Western Washington (vs. Colorado Mesa, 02/08/19)
Hit Batters:	3	Concordia (Ore.) (vs. UC San Diego, 02/01/19)
	3	Concordia (Ore.) (vs. CSU Dominguez Hills, 02/01/19)

INDIVIDUAL HIGHS

BATTING

At Bats	5	11 players tied
Runs Scored	4	Hughes, MSU Billings (vs. Mary, 02/01/19)
Hits	4	Creach, T., Western Oregon (vs. Colorado Christian, 02/01/19)
RBIs	6	Hicks, S, Saint Martin's (vs. Stanislaus State, 02/01/19)
	6	Reynolds, MSU Billings (vs. Mary, 02/01/19)
	6	Lopez, K, Saint Martin's (vs. Colorado Christian, 02/01/19)
Doubles	2	Smith, Mck., Concordia (Ore.) (vs. Simpson (Calif.), 02/10/19)
	2	Self, Concordia (Ore.) (vs. Mary, 02/03/19)
	2	Williams, Northwest Nazarene (vs. Fort Lewis, 02/09/19)
Triples	1	9 players tied
Home Runs	2	4 players tied
Total Bases	9	Hicks, S, Saint Martin's (vs. Stanislaus State, 02/01/19)
	9	Brown, Sy, Central Washington (vs. MSU Denver, 02/08/19)
	9	Hughes, MSU Billings (vs. Mary, 02/01/19)
Walks	3	Recolan, Z., Western Oregon (vs. Chico State, 02/03/19)
	3	McNicol, Northwest Nazarene (vs. MSU Denver, 02/08/19)
Strikeouts	4	French, A, Saint Martin's (vs. Stanislaus State, 02/01/19)
Sac Hits	2	Olson, Northwest Nazarene (vs. Dixie State, 02/11/19)
	2	Austin, MSU Billings (vs. Dixie State, 02/08/19)
Sac Flies	1	10 players tied
Stolen Bases	3	Diuco, L, Saint Martin's (vs. Stanislaus State, 02/01/19)
Caught Stealing	1	7 players tied
Hit By Pitch	3	Morgan, MSU Billings (vs. MSU Denver, 02/09/19)
Runners LOB	7	Reynolds, MSU Billings (vs. Fort Lewis, 02/07/19)

FIELDING

Putouts	14	Stockton, Concordia (Ore.) (vs. Simpson (Calif.), 02/10/19)
Assists	8	Vanderbout, K, Saint Martin's (vs. Colorado Christian, 02/01/19)
Errors	2	12 players tied
Passed Balls	2	Smith, Northwest Nazarene (vs. MSU Denver, 02/08/19)
	2	Self, Concordia (Ore.) (vs. Mary, 02/03/19)

PITCHING

Innings Pitched	9.0	Mayer, M., Western Oregon (vs. Cal St. Monterey Bay, 02/01/19)
	9.0	Sellevoid, Western Washington (vs. Dixie State, 02/09/19)
Strikeouts	11	Adams, Northwest Nazarene (vs. Dixie State, 02/11/19)
Wild Pitches	2	7 players tied
Hit Batters:	2	4 players tied